

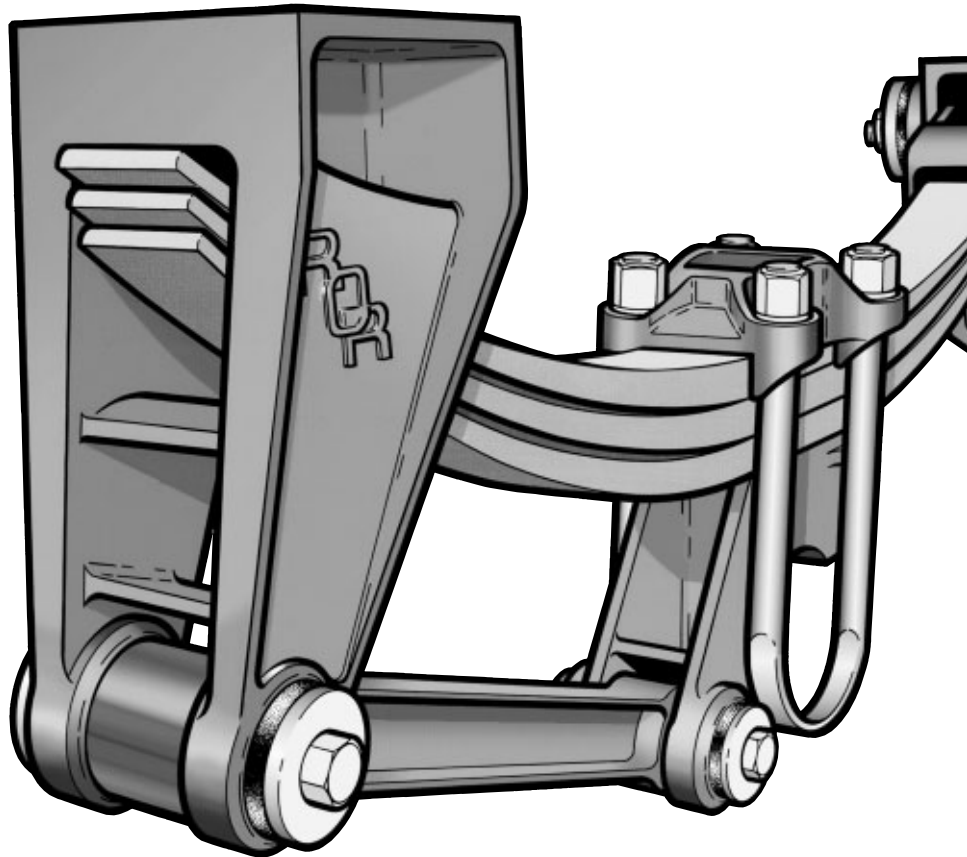


MERITOR™

ROR Trailer Products

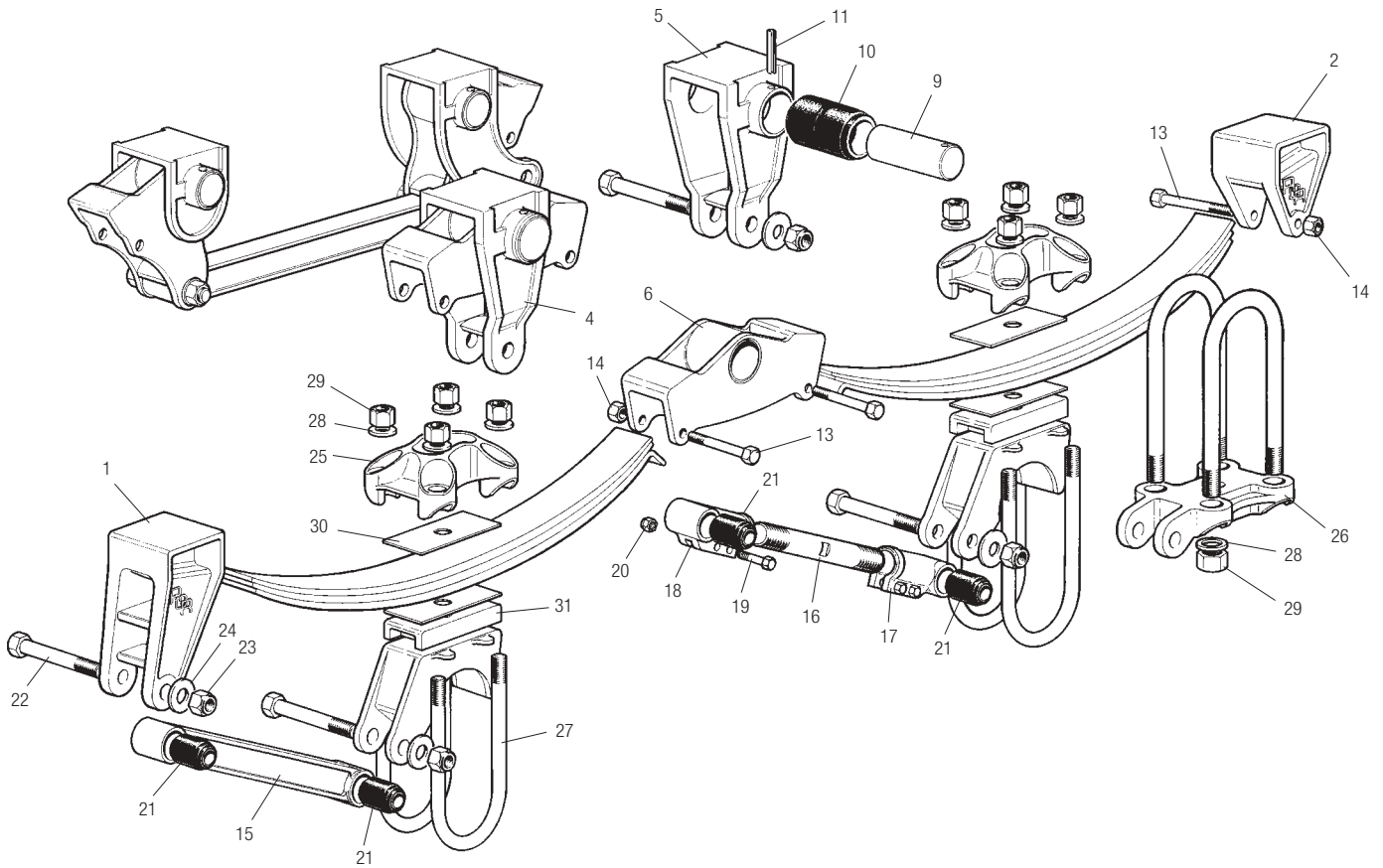
Mechanical Suspension Parts List

M, SM, SMT series suspensions



Mechanical Suspension Parts List

'M' Series Suspensions



Hanger Brackets

1	Front	21016374
2	Rear	21206082

Equalisers

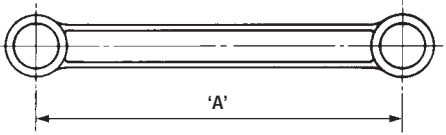
		Close Coupled	Semi-widespread	Widespread
4	Complete assembly	19016501	—	—
5	Equaliser bracket	21016379	21016379	—
6	Equaliser c/w bush	19016378A	—	19017211A
	Equaliser c/w bush — offset 105 RH	—	21212108A/105 RH	—
	Equaliser c/w bush — offset 105 LH	—	21212109A/105 LH	—
	Equaliser c/w bush — offset 160 RH	—	21202674A/160 RH	—
	Equaliser c/w bush — offset 160 LH	—	21202675A/160 LH	—
9	Shaft	21016381S	21016381S	21016381S
10	Bush	21011746	21011746	21011746
11	Drive pin	21016382	21016382	21016382
13	Bolt	21206055	21206055	21206055
14	Nut	21206037	21206037	21206037

Mechanical Suspension Parts List

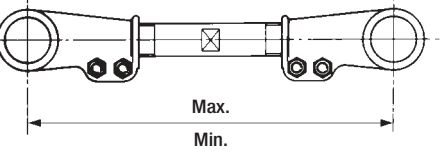


'M' Series Suspensions

Torque Arms Rigid

15		Assembly Part No.	'A' Centres	Casting No.
		<p><i>N.B. Some of these components could now be obsolete check with ArvinMeritor CVA for availability</i></p>	19016342	508
	19015936	425	21015728	
	19016345	464	21016343	
	19016346	549	21016344	
	19017126	699	21017096	
	19016645	400	21016643	
	19016646	489	21016644	
	19020813	565	21020812	
	19021083	813	21021084	
	19024873	337	21024872	
	19025442	629	21025441	
	19200655	352	21200654	
	19024387	381	21024388	
	19200121	537	21200119	
	19200122	438	21200120	

Torque Arms Adjustable

16		Assembly Part No.	Screw Part No.	Max/Min Centres mm
			19016341	21016126
	19016342	21016433	562/502	
	19017118	21016124	438/381	
	19017757	21017758	378/327	
	21019394	21019394	406/349	
	19023170	21018359	648/584	
	19201539	21201540	838/775	

Torque Arm End Assembly

17	Complete torque arm end assembly – RH	19015798
	Complete torque arm end assembly – LH	19015799
18	Torque arm end – RH	19015798
	Torque arm end – LH	21013637
19	Bolt	702220814
20	Nut	21016384
21	Bush	21011745

Fastenings, Torque Arm

22	Torque arm bolt	21015626
23	Torque arm locknut	21016115
24	Torque arm washer	21206225S

'U' Bolts and Associated Items

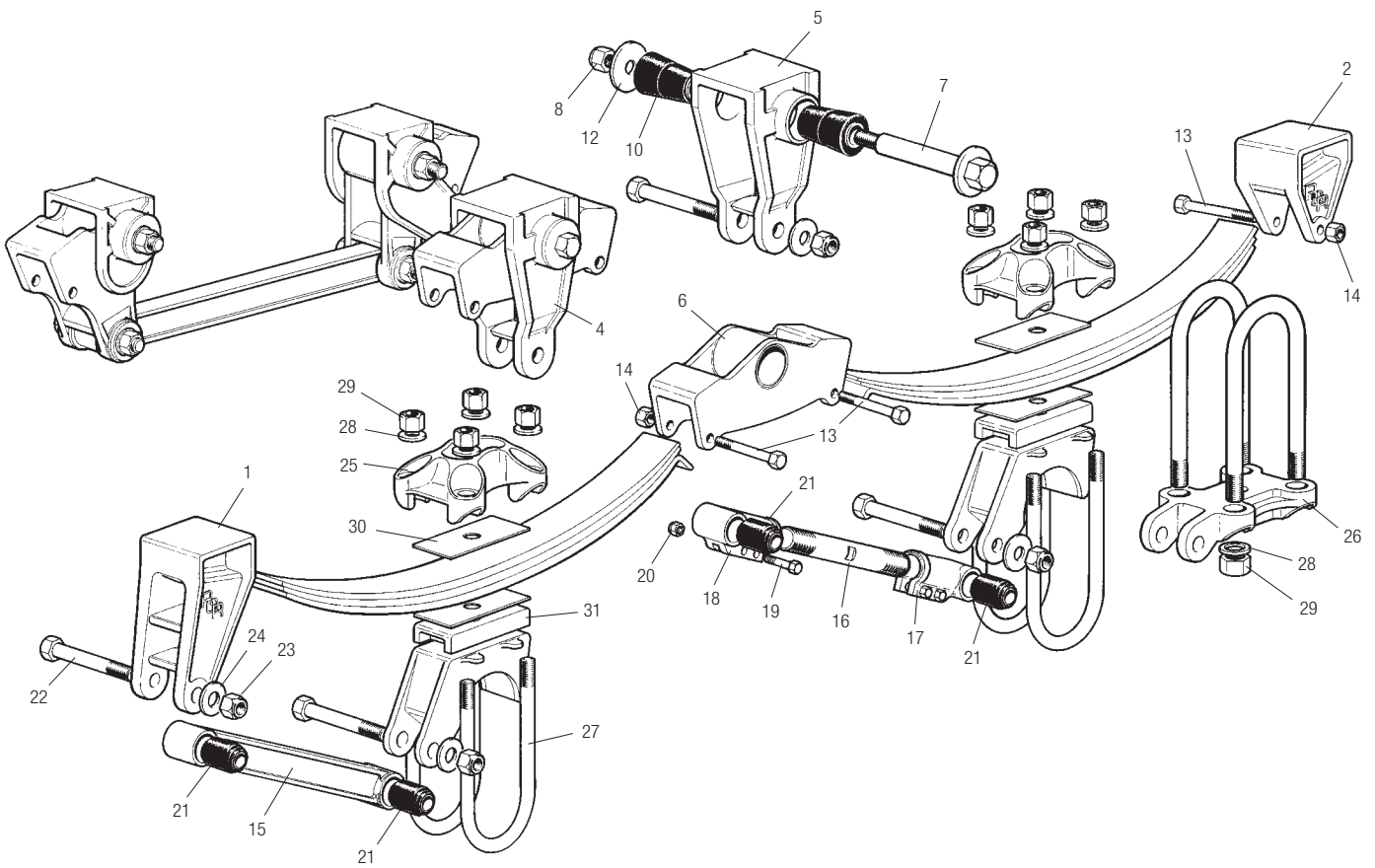
25	Top plate (standard applications)	21206056
26	Torque arm mounting bracket (underslung application)	21200109
27	'U' bolt	21206225
28	Washer, 'U' bolt	21206225S
29	Nut, 'U' bolt	21006511
30	Delrin liner	21016639
30A	Location button, underslung (not illustrated)	21200339

Spacer Block

31		Dim. B	Part No.
		70	21017317
25	21019698		
38	21018636		
45	21019763		

Mechanical Suspension Parts List

'SM' Series Suspensions



Hanger Brackets

1	Front	21016374
2	Rear	21206082

Equalisers

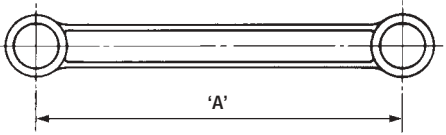
		Close Coupled	Semi-widespread	Widespread
4	Complete assembly	19203139	19204063	–
	Complete assembly – front	–	–	19204034
	Complete assembly – rear	–	–	19204033
5	Equaliser bracket	21203140	21203140	–
	Equaliser bracket – front	–	–	21204037
	Equaliser bracket – rear	–	–	21204035
6	Equaliser	21203141A	21204062	21204036
7	Bolt equaliser	21206000	21206000	21206000
8	Equaliser bolt locknut	99527004	99527004	99527004
10	Bush	21020676	21020676	21020676
12	Clamp washer	21020678	21020678	21020678
13	Bolt	21206055	21206055	21206055
14	Nut	21206037	21206037	21206037

Mechanical Suspension Parts List

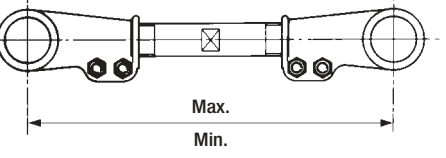
'SM' Series Suspensions



Torque Arms Rigid

15		Assembly Part No.	'A' Centres	Casting No.
		<p><i>N.B. Some of these components could now be obsolete check with ArvinMeritor CVA for availability</i></p>	19016342	508
	19015936	425	21015728	
	19016345	464	21016343	
	19016346	549	21016344	
	19017126	699	21017096	
	19016645	400	21016643	
	19016646	489	21016644	
	19020813	565	21020812	
	19021083	813	21021084	
	19024873	337	21024872	
	19025442	629	21025441	
	19200655	352	21200654	
	19024387	381	21024388	
	19200121	537	21200119	
	19200122	438	21200120	

Torque Arms Adjustable

16		Assembly Part No.	Screw Part No.	Max/Min Centres mm
			19016341	21016126
	19016342	21016433	562/502	
	19017118	21016124	438/381	
	19017757	21017758	378/327	
	21019394	21019394	406/349	
	19023170	21018359	648/584	
	19201539	21201540	838/775	

Torque Arm End Assembly

17	Complete torque arm end assembly – RH	19015798
	Complete torque arm end assembly – LH	19015799
18	Torque arm end – RH	19015798
	Torque arm end – LH	21013637
19	Bolt	702220814
20	Nut	21016384
21	Bush	21011745

Fastenings, Torque Arm

22	Torque arm bolt	21015626
23	Torque arm locknut	21016115
24	Torque arm washer	21206225S

'U' Bolts and Associated Items

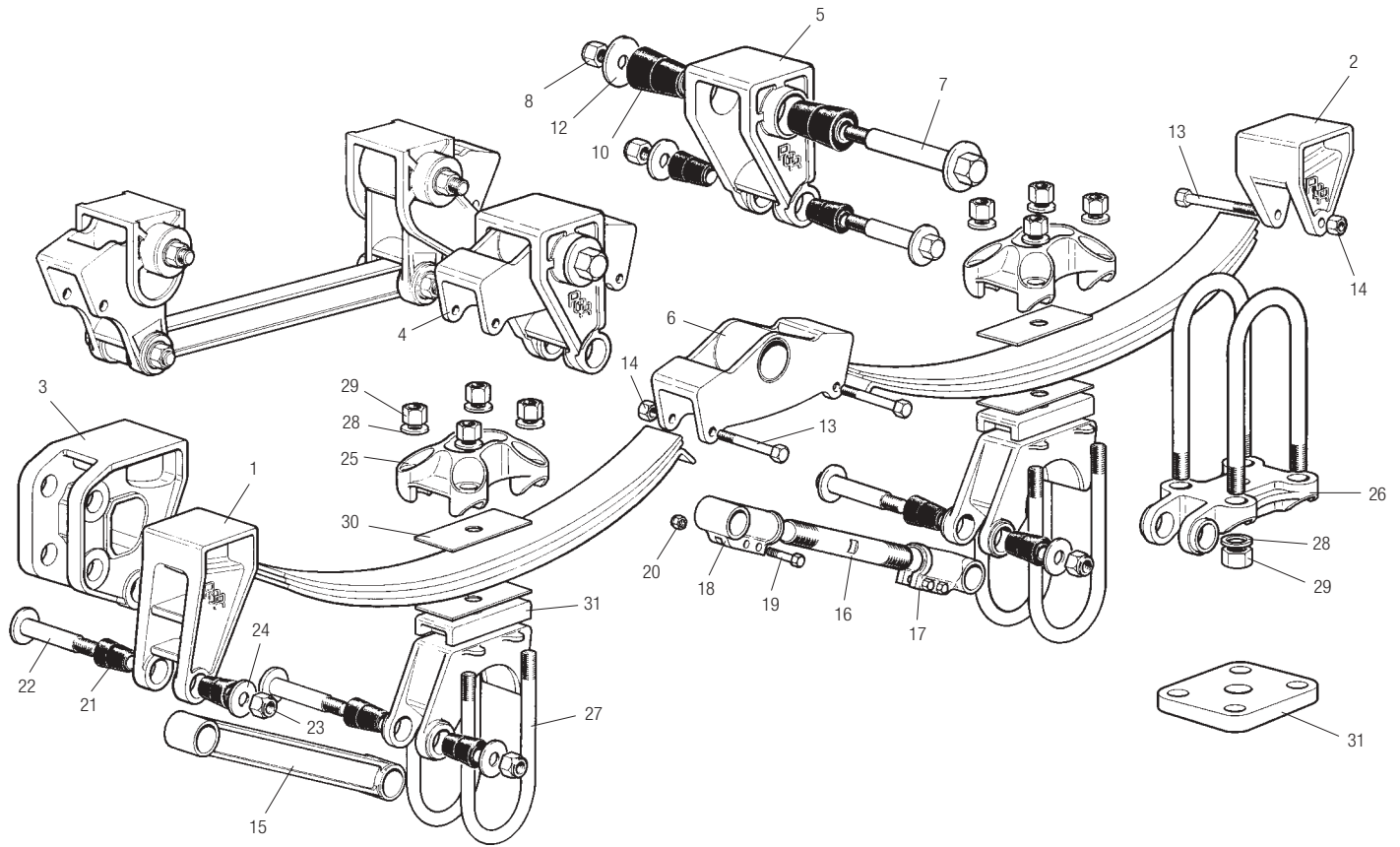
25	Top plate (standard applications)	21206056
26	Torque arm mounting bracket (underslung application)	21200109
27	'U' bolt	21206225
28	Washer, 'U' bolt	21206225S
29	Nut, 'U' bolt	21006511
30	Delrin liner	21016639
30A	Location button, underslung (not illustrated)	21200339

Spacer Block

31		Dim. B	Part No.
		70	21017317
25	21019698		
38	21018636		
45	21019763		

Mechanical Suspension Parts List

'SMT' Series Suspensions



Hanger Brackets

1	Front	21205836
2	Rear	21206082
3	Drawbar	21206941

Equalisers

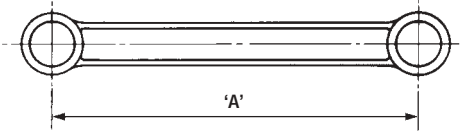
	Close Coupled	Semi-widespread	Widespread	
4	Complete assembly	19206038	19206221	–
	Complete assembly – heavy duty	19221280	–	–
	Complete assembly – heavy duty – front	–	–	19206132
	Complete assembly – heavy duty – rear	–	–	19206131
	Complete assembly – offset 110 RH	19212382/110 RH	–	–
	Complete assembly – offset 110 LH	19212383/110 LH	–	–
5	Equaliser bracket	21205837	21205837	–
	Equaliser bracket – front	–	–	21204037
	Equaliser bracket – rear	–	–	21206133
	Equaliser bracket – offset 110	21212384/110	–	–
6	Equaliser	21203141A	21204062	21206134
	Equaliser – heavy duty	21212538	–	–
	Equaliser – offset 110 RH	21212385/110 RH	–	–
	Equaliser – offset 110 LH	21212386/110 LH	–	–
7	Bolt equaliser	21206000	21206000	21206000
	Bolt equaliser – offset 110	21212390	–	–
8	Equaliser bolt locknut	99527004	99527004	99527004
10	Bush	21020676	21020676	21020676
10A	Tube spacer – offset 110	21212388	–	–
12	Clamp washer	21020678	21020678	21020678
13	Bolt	21206055	21206055	21206055
14	Nut	21206037	21206037	21206037

Mechanical Suspension Parts List

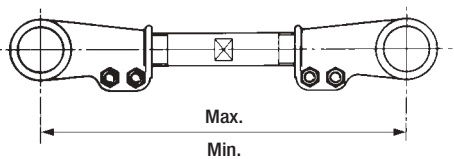
'SMT' Series Suspensions



Torque Arms Rigid

15		Part/Casting No.	'A' Centres
		21205839	464
21206135	381		
21206136	699		
21206138	549		
21206140	438		
21206141	337		
21206142	360		
21206256	406		
21204055	450		

Torque Arms Adjustable

16		Assembly Part No.	Screw Part No.	Max/Min Centres mm
		19206039	21016126	498/441
19206143	21016433	562/502		
19206144	21016124	438/381		
19206145	21017758	378/327		
19206146	21019394	406/349		
19206147	21018359	648/584		

Torque Arm End Assembly

17	Complete torque arm end assembly – RH	19209548
	Complete torque arm end assembly – LH	19209549
18	Torque arm end – RH	21205840
	Torque arm end – LH	21205841
19	Bolt	21206054
20	Nut	21206037
21	Bush	21202104

Fastenings, Torque Arm

22	Torque arm bolt	21202094
23	Torque arm locknut	21206001
24	Torque arm washer	21202092

'U' Bolts and Associated Items

25	Top plate (standard applications)	21206056
26	Torque arm mounting bracket (underslung application)	21206139
27	'U' bolt	21206225S
28	Washer, 'U' bolt	21206225S
29	Nut, 'U' bolt	21006511
30	Delrin liner	21016639
30A	Location button, underslung (not illustrated)	21200339
31	Clamp plate, underslung special (mono leaf version)	21218497

Spacer Block

31		Dim. B	Part No.
		70	21017317
25	21019698		
38	21018636		
45	21019763		

Mechanical Suspension Parts List

Springs

Part No.	No. of Leaves	Length mm	Thickness mm	Comments
21017560	Single	1221	41	1360 Axle spacing
21200891	Single	1198	41	1360 Axle spacing, tri-axle centre spring
21017788	Single	1221	38	1360 Axle spacing
21021021	Single	1198	38	1360 Axle spacing, tri-axle centre spring
21214495	Single	1175	38	1310 Axle spacing, low camber
21214496	Single	1170	38	1310 Axle spacing, tri-axle centre spring – low camber
21218360	Single	1175	41	1310 Axle spacing
21218361	Single	1170	41	1310 Axle spacing, tri-axle centre spring
21210822	2	1210	65	1360 Axle spacing
21210823	2	1190	65	1360 Axle spacing, tri-axle centre spring
21211928	2	1210	65	1360 Axle spacing, underslung
21211929	2	1190	65	1360 Axle spacing, tri-axle centre spring, underslung
21214502	2	1152	59	1310 Axle spacing
21214503	2	1128	59	1310 Axle spacing, tri-axle centre spring
21214578	2	1152	59	1310 Axle spacing, underslung
21214579	2	1128	59	1310 Axle spacing, tri-axle centre spring, underslung
21214066	3	1152	78	1310 Axle spacing
21214067	3	1128	78	1310 Axle spacing, tri-axle centre spring
21204279	3	1197	78	1360 Axle spacing
21204921	3	1175	78	1360 Axle spacing, tri-axle centre spring
21204922	3	1175	78	1360 Axle spacing, tri-axle centre spring, underslung
21204923	3	1197	78	1360 Axle spacing, underslung
21214580	3	1152	78	1310 Axle spacing, underslung
21214581	3	1128	78	1310 Axle spacing, tri-axle centre spring, underslung
21215420	3	1000	69	1145 Axle spacing
21215421	3	972	69	1145 Axle spacing, tri-axle centre spring
21217432	3	1000	69	1145 Axle spacing, underslung
21217433	3	972	69	1145 Axle spacing, tri-axle centre spring, underslung
21019961	5 + 2p	1099	100	1245 Axle spacing
21020425	5 + 2p	1099	100	1245 Axle spacing, underslung – convert from 21019961
21020876	5	1099	71	1245 Axle spacing
21016923	6	1089	102	1265 Axle spacing, tri-axle centre spring
21029750	6 + 1p	1210	102	1360 Axle spacing
21024589	6	1210	90	1360 Axle spacing, low camber
21024778	6	1175	90	1360 Axle spacing, tri-axle centre spring – low camber
21200058	6 + 1p	1210	102	1360 Axle spacing, underslung – convert from 21019750
21200996	6 + 1p	1175	102	1360 Axle spacing, tri-axle centre spring
21209864	6 + 1p	1175	102	1360 Axle spacing, tri-axle centre spring, underslung
21016922	7 + 1p	1108	102	1265 Axle spacing
21024587	7	1210	109	1360 Axle spacing – low camber spring
21024779	7	1175	109	1360 Axle spacing, tri-axle centre spring – low camber
21200108	7	1210	100	1360 Axle spacing
21200877	7	1210	100	1360 Axle spacing, underslung – convert from 21200108
21200997	7	1175	100	1360 Axle spacing, tri-axle centre spring
21202210	7	1175	100	1360 Axle spacing, underslung – convert from 21200997

Mechanical Suspension Parts List

Springs



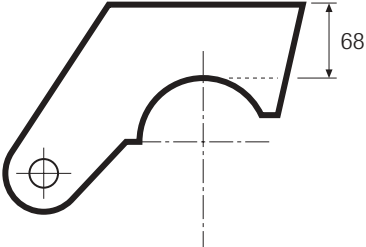
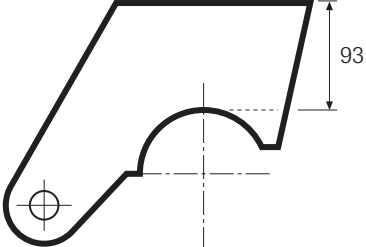
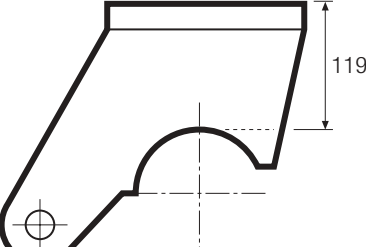
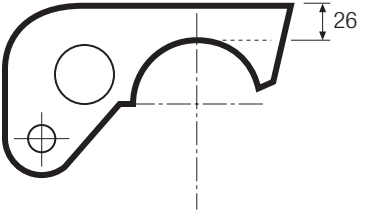
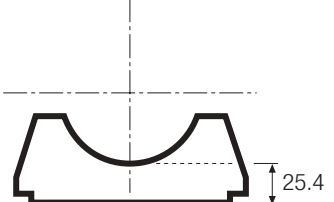
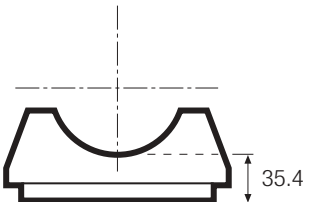
MERITOR™

Part No.	No. of Leaves	Length mm	Thickness mm	Comments
21017128	8	1210	102	1360 Axle spacing, underslung – convert from 21017650
21017650	8	1210	102	1360 Axle spacing
21018612	8	1029	102	1135 Axle spacing, tri-axle centre spring
21019196	8 + 1p	927	102	1040/1135 Axle spacing
21019399	8 + 1p	845	102	1040 Axle spacing, tri-axle centre spring
21020068	8 + 1p	927	102	1040/1135 Axle spacing, underslung – convert from 21019196
21020069	8 + 1p	845	102	1040 Axle spacing, underslung – convert from 21019399
21024734	8	1029	102	1135 Axle spacing, underslung – convert from 21018612
21200078	8	1210	114	1360 Axle spacing
21200431	8	1210	114	1360 Axle spacing, underslung – convert from 21200078
21200998	8	1175	114	1360 Axle spacing, tri-axle centre spring
21203367	8	1175	114	1360 Axle spacing, tri-axle centre spring, underslung
21212847	8	1045	102	1200 Axle spacing
21212848	8	1020	102	1200 Axle spacing, tri-axle centre spring
21017651	9	1210	114	1360 Axle spacing
21019555	9	1210	114	1360 Axle spacing, underslung – convert from 21017651
21023701	9	1175	114	1360 Axle spacing, tri-axle centre spring
21201289	9	1210	129	1360 Axle spacing
21209244	9	1175	129	1360 Axle spacing, tri-axle centre spring
21211383	9	1210	129	1360 Axle spacing, underslung – convert from 21201289
21017682	10	1210	127	1360 Axle spacing
21017798	10	1210	127	1360 Axle spacing, underslung – convert from 21017682
21200067	10	953	111	1100 Axle spacing
21200068	10	902	111	1100 Axle spacing, tri-axle centre spring
21200284	10	1175	127	1360 Axle spacing, tri-axle centre spring
21203522	10	1213	143	1360 Axle spacing
21220527	10	1213	143	1360 Axle spacing, underslung – convert from 21203522
21203636	10	1182	143	1360 Axle spacing, tri-axle centre spring
21220528	10	1182	143	1360 Axle spacing, underslung – convert from 21203636
21024588	11	933	96	1080 Axle spacing – low camber spring
21203869	11	889	96	1080 Axle spacing, tri-axle centre spring – low camber spring
21203629	11	1213	157	1360 Axle spacing
21203630	11	1182	157	1360 Axle spacing, tri-axle centre spring
21025427	12	1210	152	1360 Axle spacing
21211035	12	1210	152	1360 Axle spacing, underslung – convert from 21025427
21202467	12	1175	152	1360 Axle spacing, tri-axle centre spring
21211036	12	1175	152	1360 Axle spacing, underslung – convert from 21202467

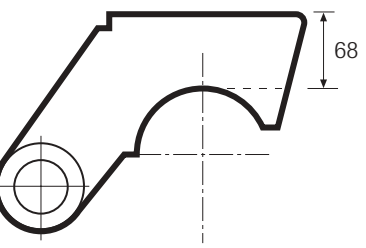
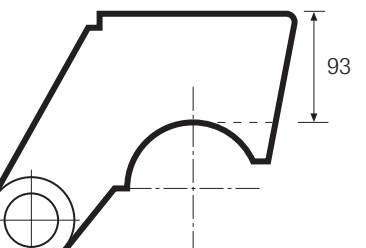
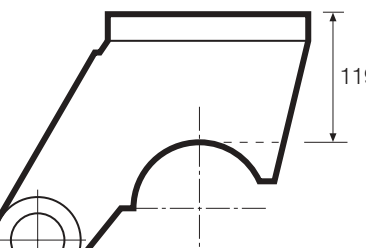
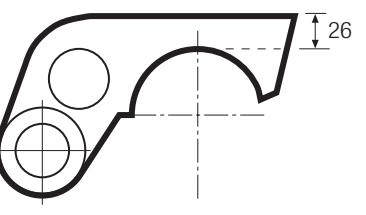
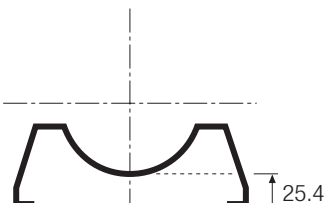
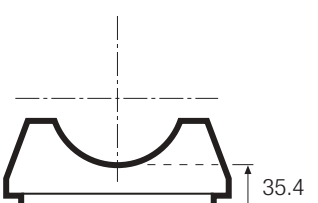
Mechanical Suspension Parts List

Spring Seats

M & SM

 <p>Technical drawing of a spring seat (part 21017616) showing a side view with a height dimension of 68. The part has a curved bottom edge and a circular hole on the left side.</p>	 <p>Technical drawing of a spring seat (part 21017617) showing a side view with a height dimension of 93. The part has a curved bottom edge and a circular hole on the left side.</p>	 <p>Technical drawing of a spring seat (part 21020407) showing a side view with a height dimension of 119. The part has a curved bottom edge and a circular hole on the left side.</p>
 <p>Technical drawing of a spring seat (part 21024150) showing a side view with a height dimension of 26. The part has a curved bottom edge and two circular holes on the left side.</p>	 <p>Technical drawing of a spring seat (part 21018673) showing a top view with a width dimension of 25.4. The part has a curved bottom edge.</p>	 <p>Technical drawing of a spring seat (part 21201739) showing a top view with a width dimension of 35.4. The part has a curved bottom edge.</p>

SMT

 <p>Technical drawing of a spring seat (part 21205838) showing a side view with a height dimension of 68. The part has a curved bottom edge and a circular hole on the left side.</p>	 <p>Technical drawing of a spring seat (part 21206070) showing a side view with a height dimension of 93. The part has a curved bottom edge and a circular hole on the left side.</p>	 <p>Technical drawing of a spring seat (part 21206111) showing a side view with a height dimension of 119. The part has a curved bottom edge and a circular hole on the left side.</p>
 <p>Technical drawing of a spring seat (part 21206071) showing a side view with a height dimension of 26. The part has a curved bottom edge and two circular holes on the left side.</p>	 <p>Technical drawing of a spring seat (part 21018673) showing a top view with a width dimension of 25.4. The part has a curved bottom edge.</p>	 <p>Technical drawing of a spring seat (part 21201739) showing a top view with a width dimension of 35.4. The part has a curved bottom edge.</p>

Mechanical Suspension Parts List

Suspension Kits



SUS 1



Torque Arm Bush/Bolt Kit

Suitable for M & SM series suspensions

Qty	Component	Part No.
2	Torque arm bolt	21015626
2	Torque arm bush	21011745
2	Washer	21206539
2	Locknut	21016115

SUS 2



Equaliser Bush Kit

Suitable for SMT, SM and T series suspensions

Qty	Component	Part No.
1	Equaliser shaft	21206000
1	Nut	99527004
2	Bush	21020676
1	Washer	21020678

SUS 3



Torque Arm Bush/Bolt Kit

Suitable for all SMT series suspensions

Qty	Component	Part No.
2	Torque arm bolt	21202094
2	Locknut	99527004
2	Washer	21202092
4	Bush	21202104

SUS 4



Equaliser Bush Kit

Suitable for M series suspensions

Qty	Component	Part No.
1	Shaft	21016381S
1	Bush	21011746
1	Pin	21016382

Mechanical Suspension Parts List

Warranty

A comprehensive network of original parts distributors and service stations operate throughout Europe; this is supported internationally with agents strategically placed around the world.

All Meritor replacement parts obtained through original parts distributors are covered by a one year warranty.

For full warranty terms and conditions see 'Meritor Warranty Terms and Conditions' Publication No 4.84.1

Meritor reserve the right to make changes in specifications shown herein or add improvements at any time without notice or obligation.

PARTS SHOWN IN THIS SPARES LIST ARE MADE FROM DRAWINGS IN WHICH COPYRIGHT SUBSISTS. THE MAKING OF COPIES OF ANY OF THESE PARTS IS PROHIBITED.

© Meritor HVS Limited



The high quality assurance management systems applied by Meritor are endorsed with the awarding of ISO 9001, Lloyd's Register Quality Assurance.

Mechanical Suspension Parts List



Mechanical Suspension Parts List

Mechanical Suspension Parts List





ArvinMeritor

Commercial Vehicle Aftermarket AG
Neugutstrasse 89
8600 Dübendorf
Switzerland
Tel: +41 (0)44 824 82 00
Fax: +41 (0)44 824 82 65

ArvinMeritor

Commercial Vehicle Aftermarket Ltd.
Park Lane, Great Alne, Alcester
Warwickshire B49 6HT
U.K.
Tel: 0845 606 7733
Fax: 0845 606 8844

www.arvinmeritor.com

Descriptions and specifications were in effect at the time of publication and are subject to change without notice or liability. Meritor reserve the right to make design improvements, change or discontinue parts at any time.

© Copyright 2004
Meritor Automotive
All rights Reserved

Issued 08-04
Publication CVA-4.08.8

ArvinMeritor™